

# RAMMER 9033E

EXCELLENCE LINE



**FACTORY  
INSTALLED  
RD3 FOR  
MYFLEET**

RAMVALVE

HARD WEAR PLATES

RAMLUBE II (OPT.)

EASY IBP ADJUSTMENT

MEMBRANE TYPE  
ACCUMULATOR

FBE (FIXED BLOW ENERGY)

DOUBLE TOOL RETAINING  
PIN STRUCTURE

VIDAT TIE RODS

STROKE SELECTOR

HEAVY DUTY HOUSING

SIMPLE LOWER TOOL  
BUSHING REPLACEMENT

SEPARATE GREASING  
INTO LOWER AND  
UPPER TOOL BUSHING

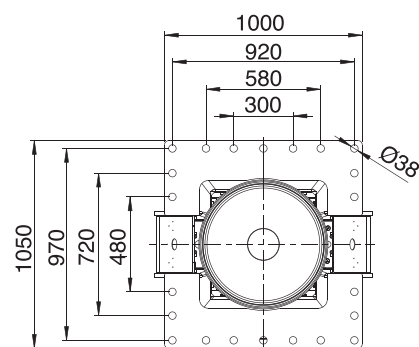
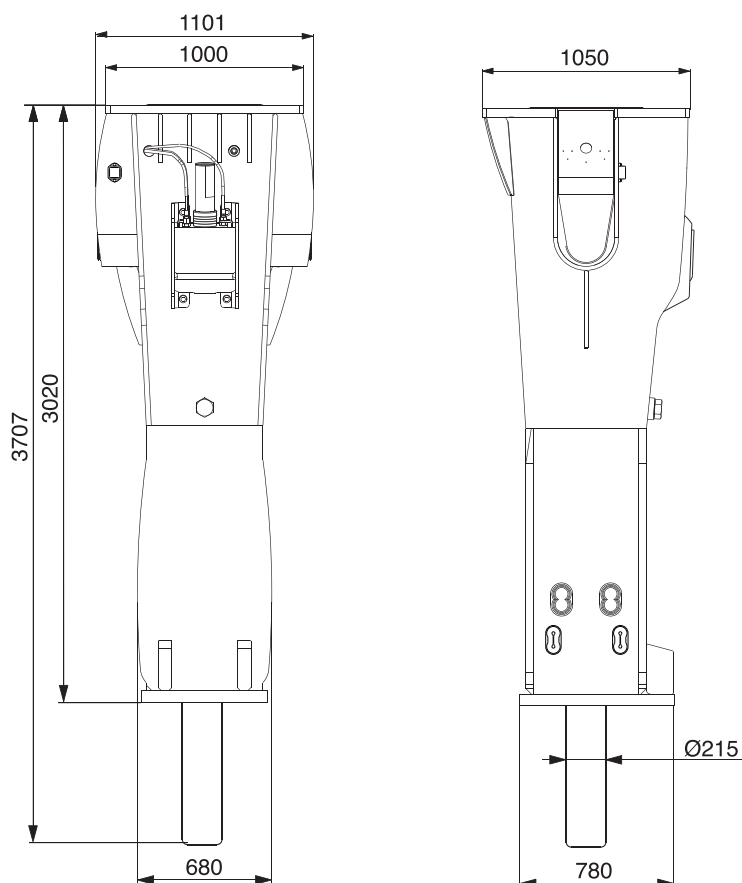
REFLECTIVE STICKERS

## EXCELLENCE LINE HITS SMARTER

The Rammer Excellence Line is a set of state-of-the-art hydraulic hammers for all your rock breaking needs. All Excellence Line hammers now have integrated smart technology for easier fleet management and more efficient processes.

Read more about the product from  
[www.rammer.com/excellence](http://www.rammer.com/excellence)

**Ram  
mer®**



## SPECIFICATIONS

|                                                    |                        |
|----------------------------------------------------|------------------------|
| Minimum working weight, kg (lb)                    | 7400 (16310)           |
| Impact rate, Long Stroke, bpm                      | 300–520                |
| Impact rate, Short Stroke, bpm                     | 355–645                |
| Operating pressure                                 | 170–180 (2465–2610)    |
| Pressure relief, min bar (psi)                     | 230 (3335)             |
| Pressure relief, max bar (psi)                     | 240 (3480)             |
| Oil flow range, l/min (gal/min)                    | 360–460 (95.1–121.5)   |
| Back pressure, max bar (psi)                       | 10 (145)               |
| Input power, kW (hp)                               | 138 (185)              |
| Tool diameter, mm (in)                             | 215 (8.46)             |
| Carrier weight, allowed range, t (lb)              | 65–120 (143300–264600) |
| Noise level, measured sound power level, LWA, dB   | 127                    |
| Noise level, guaranteed sound power level, LWA, dB | 131                    |

## TOOLS

|                  |            |
|------------------|------------|
| Chisel           | Moil point |
| Hard rock chisel | Pyramid    |
| Limestone chisel | Blunt      |

## PARTS

|               |                     |
|---------------|---------------------|
| Service kit 1 | Special tool grease |
| Service kit 2 | Meissel paste       |

Sandvik Mining and Construction Oy  
 Taivalkatu 8, P.O.Box 165  
 FI-15101 Lahti, Finland  
 Phone Int. +358 205 44 151  
 rammer@sandvik.com  
 www.rammer.com

**Ram  
mer®**